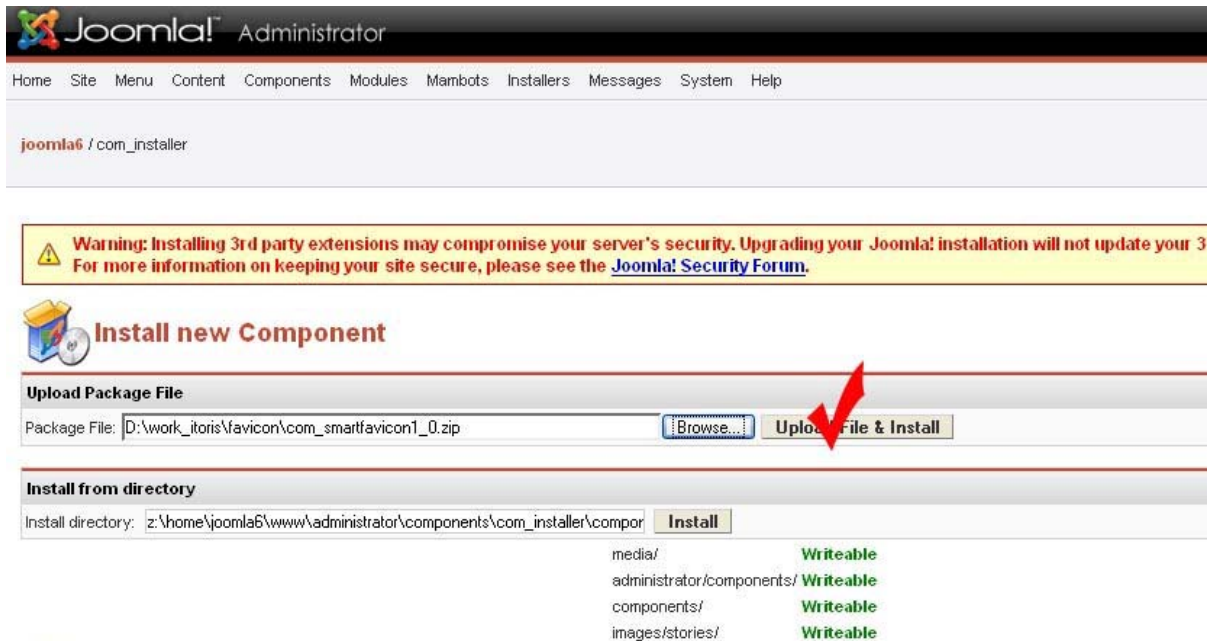


User Guide for Smart Favicon (v. 1.0)

1. Installation

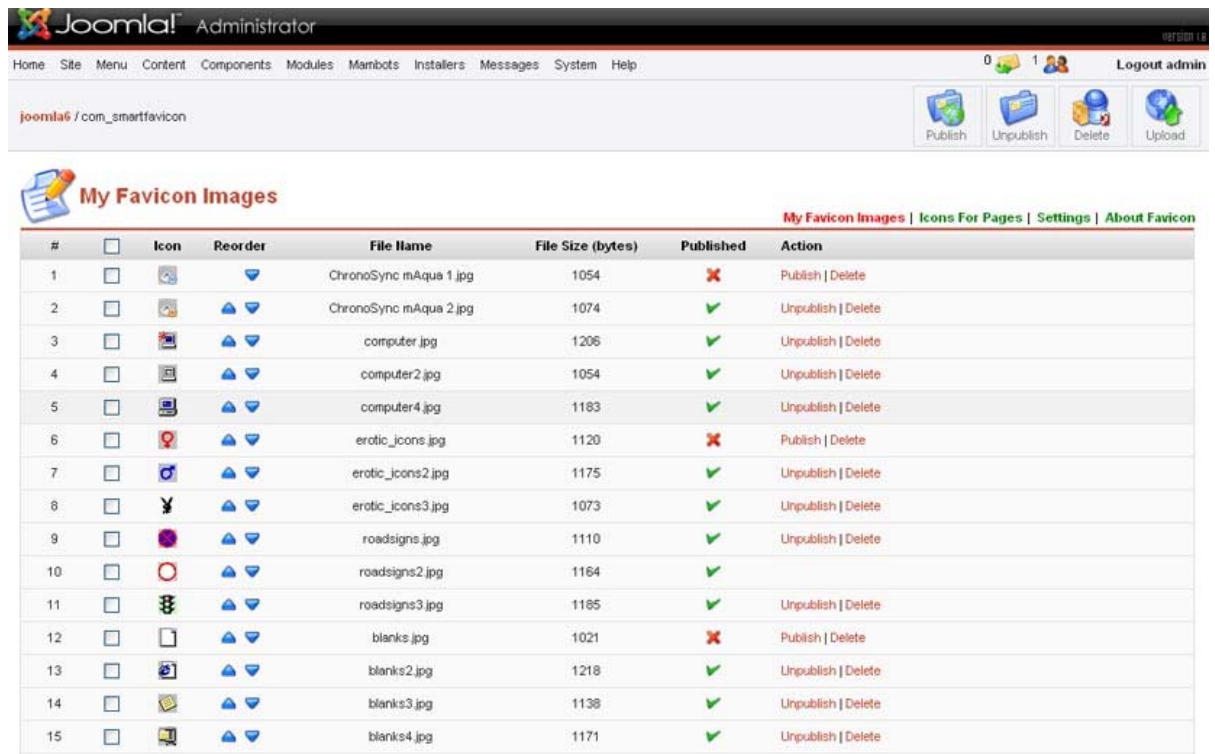
The installation of Smart Favicon is applied through the standard Joomla! install process. It includes the following steps:



- Please download the component to your local computer
 - Login to your Joomla! site's admin area
- N.B.** *you should have either Administrator or Super administrator permissions*
- Choose Installers ->Components.
 - In Upload Package File area press the Browse button, choose the Smart Favicon's component (com_smartfavicon1_0.zip) and press Upload File& Install button.
 - That's it. Now Smart Favicon has been installed on your web site. Now it is available in Components -> Smart Favicon. Enjoy please 😊.

2. Smart Favicon Usage

2.1. My Favicon Images.



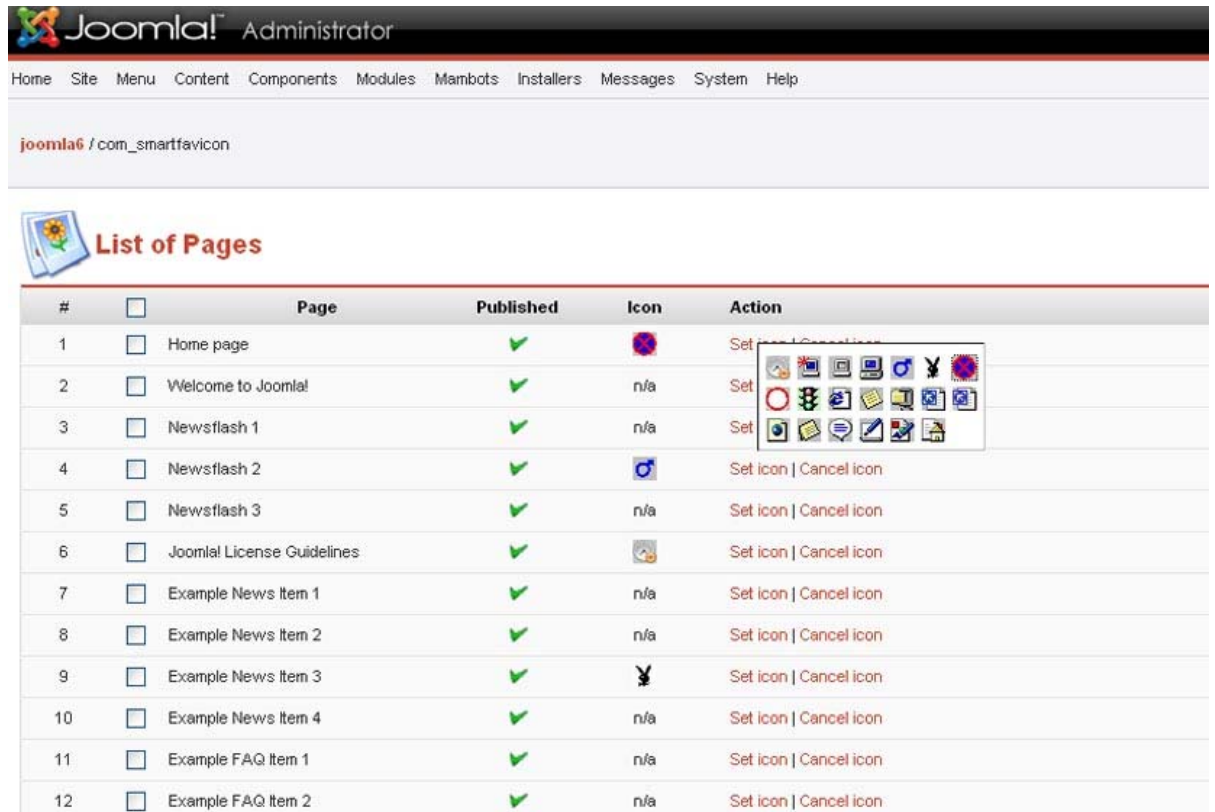
The page contains the list of default favicon images. You may use them or upload your own ones.

For uploading please press Browse button under the list, choose the image you want to upload and press Upload File.

N.B. All GIF, JPEG, PNG and ICO images will be automatically resized to the standard Favicon size (16x16 pixels)

2.2. Icons For Pages

This block allows adding Favicons to your content pages.



You may set a unique icon for each page – or repeat the same icon on several different pages.

When you point the mouse on Set Icons link – there pops-up the list of your icons. By clicking any of them you bind it to the appropriate page.

After choosing the icons press Apply button to apply and save the choice.

N.B. Archived pages will be shown as well; still they will have a red cross in the Published column. Favicons can be bound to them as well. Once the pages are active again – the favicons will be displayed on the Front-end

2.3. Settings

The page allows you choosing your personal settings of Favicon displaying.

You may set one Favicon displaying on you site all time or set a certain period of favicons' change and a number of various favicons.

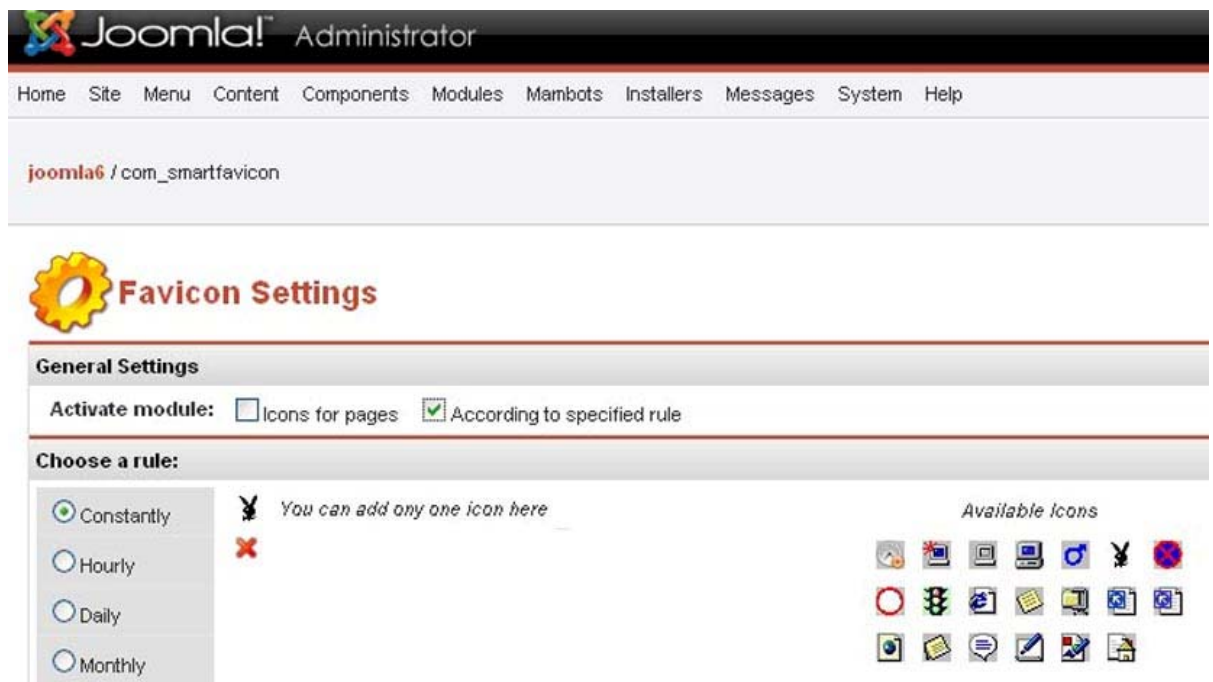
Each setting has its own sub-settings.

N.B. *Icons for Pages module has more priority than According to specified rule module. Once the first is checked – the settings on it will be a higher priority.*


The following settings modes are available:

2.3.1. Constantly

This setting allows choosing one permanent icon which will be displayed all time. The icon can be chosen from the list of available icons.



The screenshot shows the Joomla! Administrator interface for the 'Favicon Settings' page. The breadcrumb trail is 'joomla6 / com_smartfavicon'. The page title is 'Favicon Settings'. Under 'General Settings', the 'Activate module' section has 'Icons for pages' unchecked and 'According to specified rule' checked. The 'Choose a rule' section has 'Constantly' selected. A red cross icon is visible under the 'Constantly' rule. To the right, there is a grid of 'Available Icons'.

Once you wish to change the chosen icon – please press the red cross  under it – it will be deleted. After that you may choose the new one from the Available Icons' list.

By pressing Apply button you apply and save the changes. By pressing Restart button you null the counter and the new settings start working from the present moment.

2.3.2. Hourly

Please choose several icons form Available Icons' list.

The screenshot shows the Joomla! Administrator interface for the 'com_smartfavicon' component. The 'Favicon Settings' page is displayed. In the 'General Settings' section, the 'Activate module' checkbox is checked for 'Icons for pages'. Under the 'Choose a rule:' section, the 'Hourly' radio button is selected, and the 'Every' field is set to '1' hours. To the right, there is a grid of icons with blue arrows for sorting and a red cross for deletion. An 'Available Icons' list is also visible on the right side of the interface.

The icons can be deleted form the active list by pressing the red cross or sorted using the top and bottom arrows.

N.B. *The icons will be displayed according to the current order (top to bottom). If you wish to change the order of display – please change the current order using top and bottom arrows.*

Now you may choose one of two variants:

✓ **Every X hours**

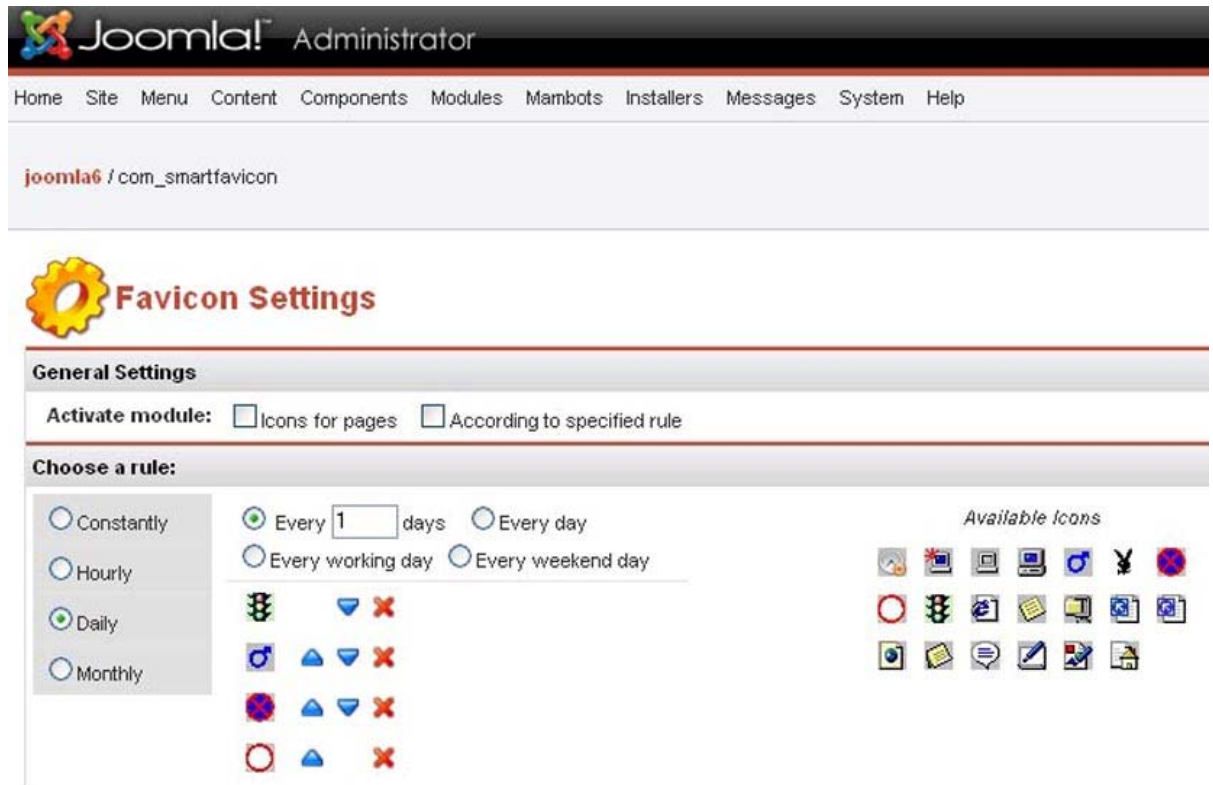
The setting allows you changing the active icon on the front-end of your site every X hours.

✓ **Set time of start**

The setting allows you indicating the time your active icon should be changed to the new one.

2.3.3. Daily

Please choose several icons form Available Icons' list.



The icons can be deleted form the active list by pressing the red cross or sorted using the top and bottom arrows.

Now you may choose the following variants:

✓ **Every X days**

E.g. you have chosen 3 icons – let us call them A, B and C. You've set Every 5 days. After you apply the changes and press the Restart button – the A icon will be displayed. On the 6th day the B icon will be shown. On the 11th day the icon C will be displayed. After that the cycle will be repeated.

✓ **Every day**

The icons you've chosen will be changed every day.

✓ **Every working day**




The icons you've chosen will be changed working day. The Friday's icon will stay unchangeable for Saturday and Sunday.

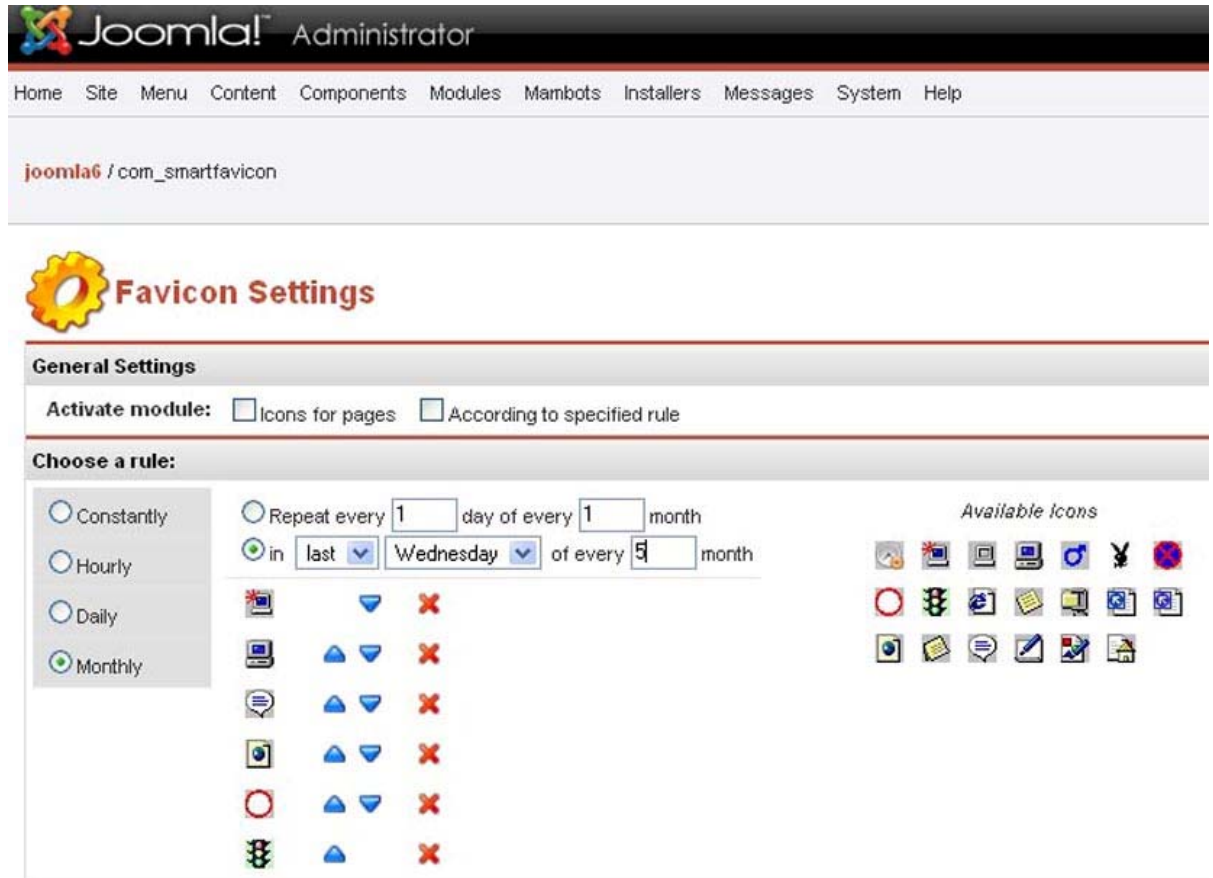
✓ **Every weekend day**

The icons you've chosen will be changed weekend day. The Sunday's icon will stay unchangeable for the period from Monday till Friday.

2.3.4. Monthly

Please choose several icons from Available Icons' list.

The icons can be deleted from the active list by pressing the red cross  or sorted using the top  and bottom  arrows.



Now you may choose the following variants:

✓ **Repeat every X day of every X month**

E.g. you've chosen – Repeat every 5th day of every 2nd month. And it is August now. So on the 5th of October the icon will be changed to the next one. On the 5th of December the icon will be changed again.

✓ **In [1/2/3/4/last]**

[Monday/Tuesday/Wednesday/Thursday/Friday/Saturday/Sunday] of every X month.

3. Deinstallation.

The deinstallation of Smart Favicon is applied through the standard Joomla! uninstall process.

Currently Installed	Component Menu Link	Author	Version	Date	Author E-mail	Author URL
<input type="radio"/> Banners		Joomla! Project	1.0.0	July 2004	admin@joomla.org	www.joomla.org
<input type="radio"/> Mass Mail		Joomla! Project	4.5.1	February 2005	admin@joomla.org	www.joomla.org
<input type="radio"/> News Feeds	option=com_newsfeeds	Joomla! Project	1.0.0	July 2004	admin@joomla.org	www.joomla.org
<input type="radio"/> Polls	option=com_poll	Joomla! Project	1.0.0	July 2004	admin@joomla.org	www.joomla.org
<input checked="" type="radio"/> Smart Favicon	option=com_smartfavicon	Dmitry Golovatsky	1.0.0	November 2007	sales@itoris.com	www.itoris.com
<input type="radio"/> Syndicate		Joomla! Project	1.0.0	Unknown	admin@joomla.org	www.joomla.org
<input type="radio"/> Web Links	option=com_weblinks	Joomla! Project	1.0.0	July 2004	admin@joomla.org	www.joomla.org

- Please choose Install -> Components in the admin area of your web site.
- The Installed Components' list contains all currently installed components. Please check the one you wish to uninstall and press Uninstall button.
- The component will be uninstalled.