

# **File Magus for Magento**

## **User Guide**

version 1.0

*created by IToris Project Team*  
**IToris, Inc.**

**Table of contents**

1.	Introduction .....	3
1.1.	Legend .....	3
1.2.	Purpose .....	3
1.3.	System Requirements .....	3
1.4.	Supported Browsers .....	3
1.5.	License. What it includes .....	3
2.	Installation and Update .....	4
3.	Interface .....	4
3.1.	Configuration .....	4
3.1.1.	Pans .....	4
3.1.2.	Display of files and folders (properties) .....	6
3.1.3.	Icons on the top toolbar .....	7
3.1.1.	Language .....	7
3.1.1.	Plug-ins and Templates .....	7
3.2.	Overview of the working area .....	7
3.2.1.	Pans .....	7
3.2.1.	Files and Folders .....	8
3.2.2.	Top Toolbar .....	10
3.2.3.	Addressbar .....	10
3.2.1.	Command Line .....	11
3.2.2.	Infobar .....	11
3.2.3.	Hot buttons .....	12
3.2.1.	Hot commands .....	12
3.3.	Work with files and folders .....	13
3.3.1.	View .....	13
3.3.2.	Edit .....	13
3.3.3.	New/upload .....	14
3.3.1.	Change attributes .....	15
3.3.1.	Archives .....	15
3.3.1.	Actions applied to several files/directories .....	16
3.3.1.	Search .....	16
3.3.1.	Special features .....	17
3.4.	Remote connections .....	18
3.4.1.	HTTP Download .....	18
3.4.2.	FTP .....	18
3.5.	View System Information .....	19
	Appendix A .....	20

## 1. Introduction

### 1.1. Legend



Important notices

Example

### 1.2. Purpose

**File Magus** is a universal Magento file manager. It provides direct access to the files and folders of your Magento store and advanced file management.

It has been developed to manage files from the back-end in a convenient and intuitive way. Files can be managed visually – copied to directories with drag-and-drop, bulk management – moving, copying, deletion, drag from a local compute directly to website's server. Using this component, users will be able to archive, unpack files, preview files based on their extension, edit text files, download files, work via the FTP connection, generate file list, execute OS commands, etc. AJAX and XML technologies are used to make the extension work on-the-fly and to create it up-to-date and fast.

It has become a good tradition here in IToris to develop web-extensions with advanced behavior that makes them similar to the desktop applications in power and convenience as well as features and logic provided. Following the tradition **File Magus** behaves as your favorite advanced desktop file manager.

### 1.3. System Requirements

**File Magus** is provided for Magento 1.3.x/1.4.x CE. So that to guarantee the correct work of the component, special technical requirements should be met. They are:

- Magento 1.3.x or higher
- MySQL DB 4.1.x or higher
- PHP 4.3.x or higher

### 1.4. Supported Browsers

- Mozilla Firefox (recommended) v2.0 or higher
- Internet Explorer v7.0 or higher
- Google Chrome 1.0 or higher
- Opera 9.5 or higher
- Safari 3.0 or higher

### 1.5. License. What it includes.

**File Magus** is domain-dependent. One license of File Magus can activate one domain or sub-domain or localhost only.



You can switch the license from one domain to another. After the purchase together with the license key you will receive login details to <http://www.itoris.com> (or if you have purchased an extension from our website before the new component will be added to your account).

Login and go to **My Downloads**, there your key(s) will go either free or in association with a domain name. Reset the key, then use it again to activate a new domain.

## 2. Installation and Update

All our Magento extensions and templates are installed via [IToris Installer](#).

Download [IToris Installer](http://www.itoris.com/itoris-magento-installer.html) from here <http://www.itoris.com/itoris-magento-installer.html> and unpack to the root of your website. It will then appear in menu **System ->IToris extensions -> IToris Installer**.

Open it and you will see all our Magento Extensions and Templates, both installed and available. You can install, update and un-install them with one click now.

Find [Product Tabs Slider](#) in the list of extensions and press **Install** button. It will ask for the license key that you will receive after the purchase. Enter the key and submit. The extension will be installed. It will be available in menu **System ->IToris extensions -> File Magus**.

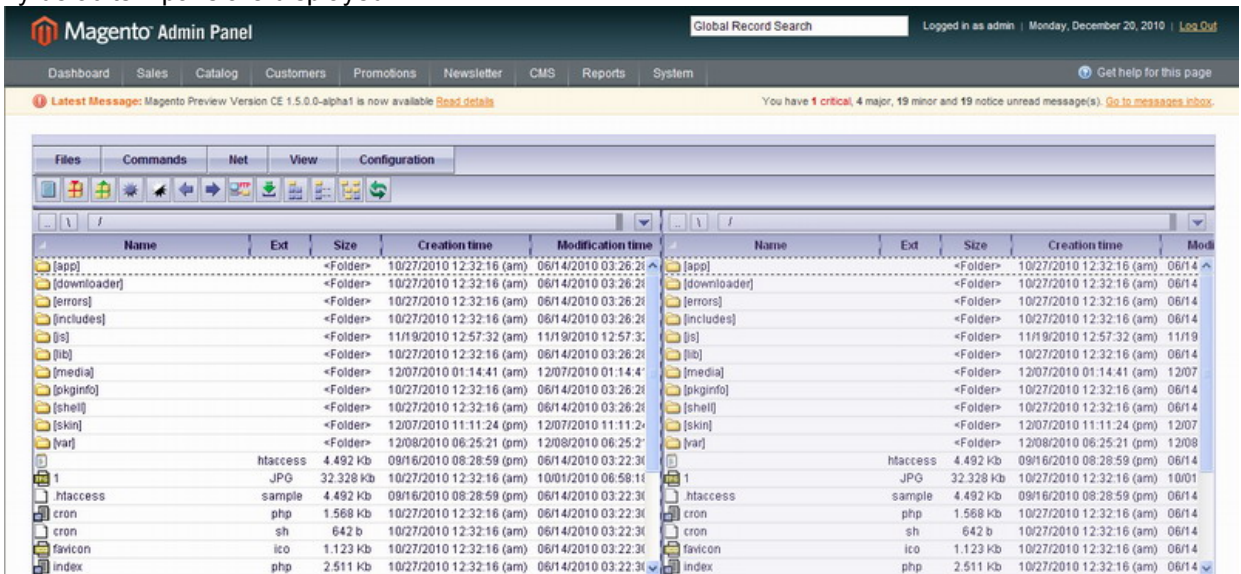
## 3. Interface

### 3.1. Configuration

**File Magus** is very configurable. You can set it the way you prefer. So what can be configured:

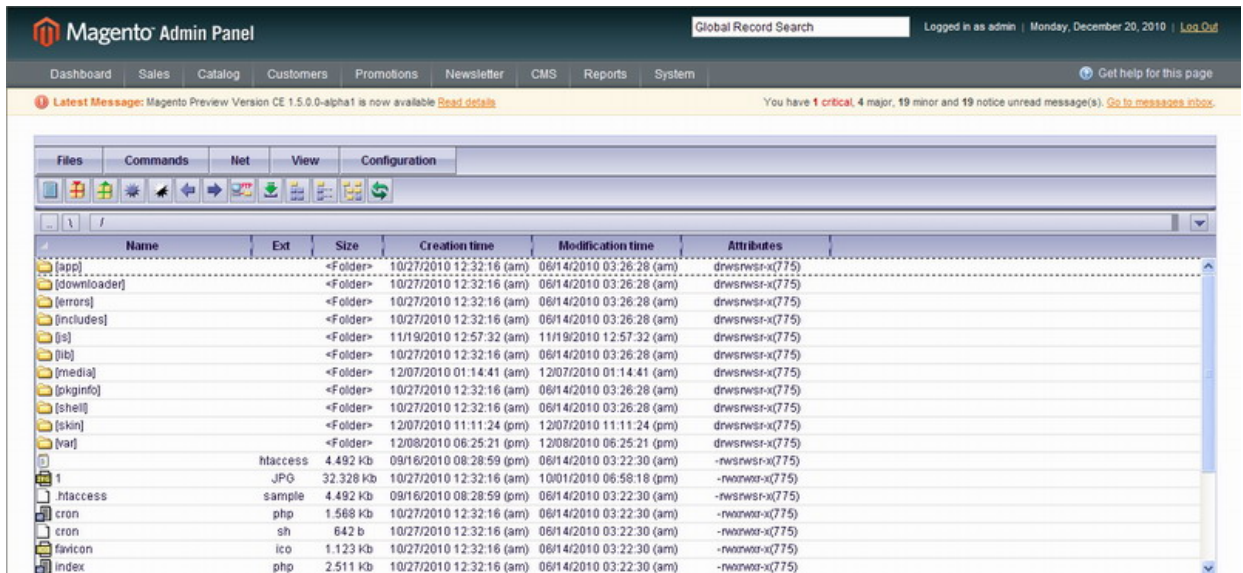
#### 3.1.1.Pans

By defaults 2 pans are displayed.

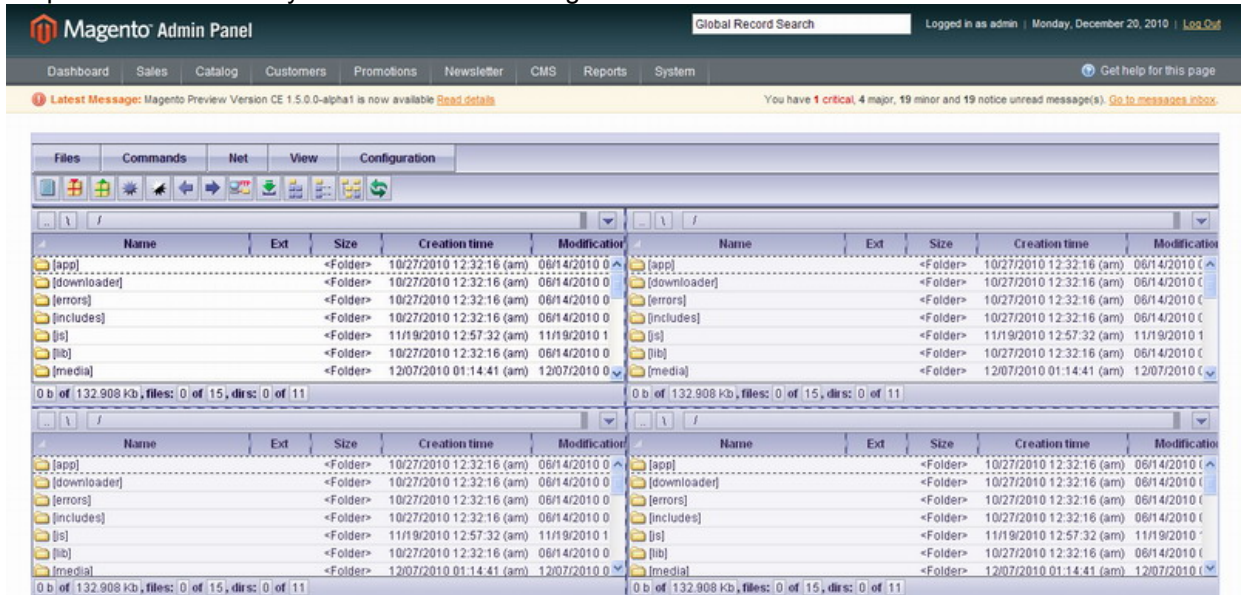


You can set 1, 2 or 4 pans to be displayed. To change the number of pans select **View -> Pan Mode**. You will see that 2-pan mode is selected (selected settings are dented). Select another option.

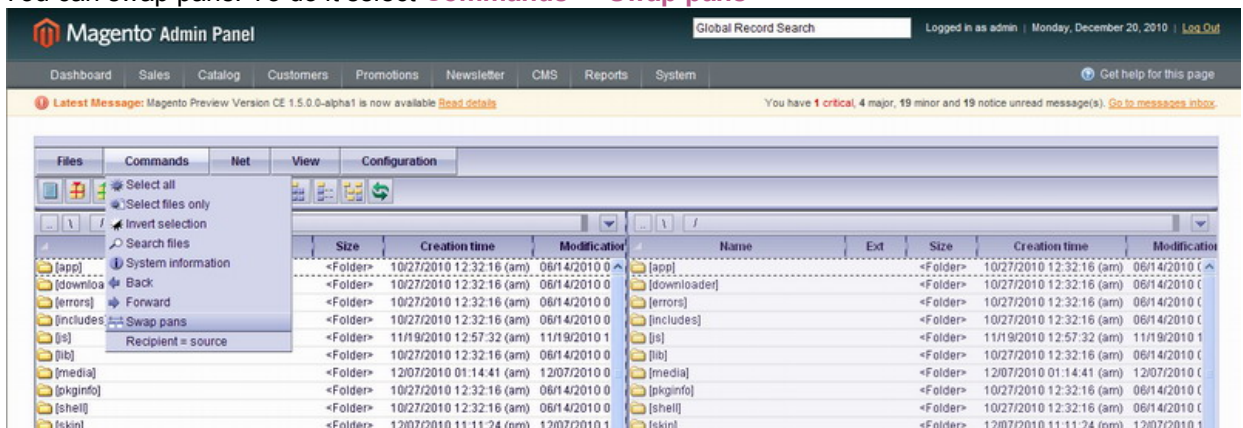
If 1-pan mode is selected – you will see the following:



If 4 pans are selected – you will see the following:



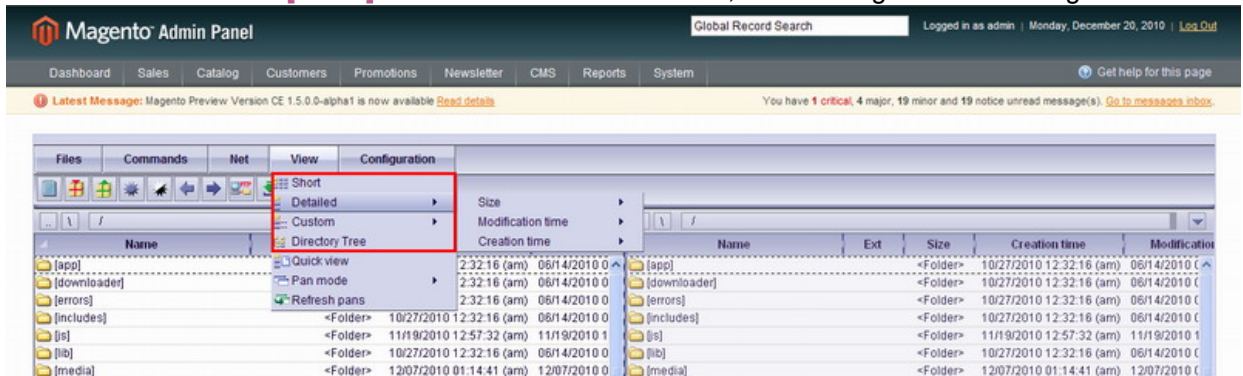
You can swap pans. To do it select **Commands -> Swap pans**



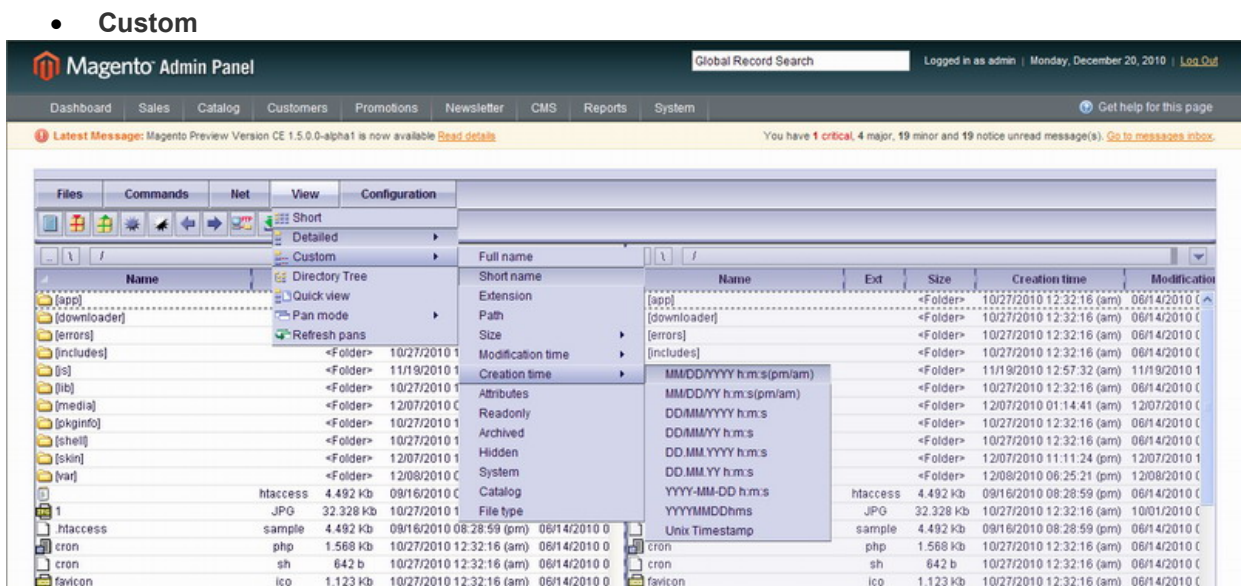
You can switch the inactive pan(s) to the same directory as in the active one. Select **Commands -> Recipient = Source**

### 3.1.2. Display of files and folders (properties)

You can change the way your files and folders are displayed. To change the display of folders and files select **View -> [mode]**. There are 4 modes available, each having own sub-settings.



- **Short**  
This mode will display the name and extension of files.
- **Detailed**  
This mode will display name, extension, size and creation time of files. This mode is defaults one. It has additional sub-settings. You can select:
  - size unit (bytes, Kbytes, etc.)
  - modification time's format (mm/dd/yyyy, dd/mm/yyyy, etc.)
  - creation time's format (mm/dd/yyyy, dd/mm/yyyy, etc.)



This mode will display the file's properties you select. All dented properties will be displayed. The available properties are the following:

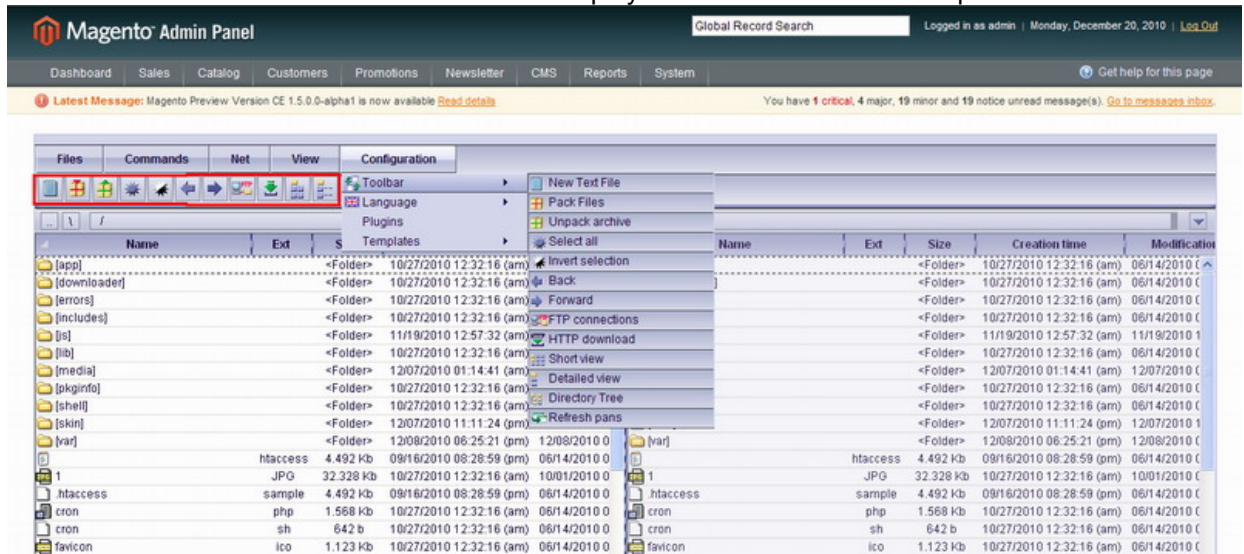
- **Full name/short name**
- **Extension**
- **Path**
- **Size**
  - **size unit** (bytes, Kbytes, etc.)
- **Modification time**
  - **modification time's format** (mm/dd/yyyy, dd/mm/yyyy, etc.)
- **Creation time**
  - **creation time's format** (mm/dd/yyyy, dd/mm/yyyy, etc.)
- **Attributes**

- Readonly
- Archived
- Hidden
- System
- Catalog
- File Type
- Directory tree

- Directory tree

### 3.1.3. Icons on the top toolbar

You can choose which icons to be displayed as Hot actions on the top toolbar.



To select the icons go to **Configuration -> Toolbar**. All dented icons will be displayed

### 3.1.1. Language

To select a language of the component go to **Configuration -> Language**. Currently English and Russian languages are available. More languages is planned to add in future.

### 3.1.1. Plug-ins and Templates

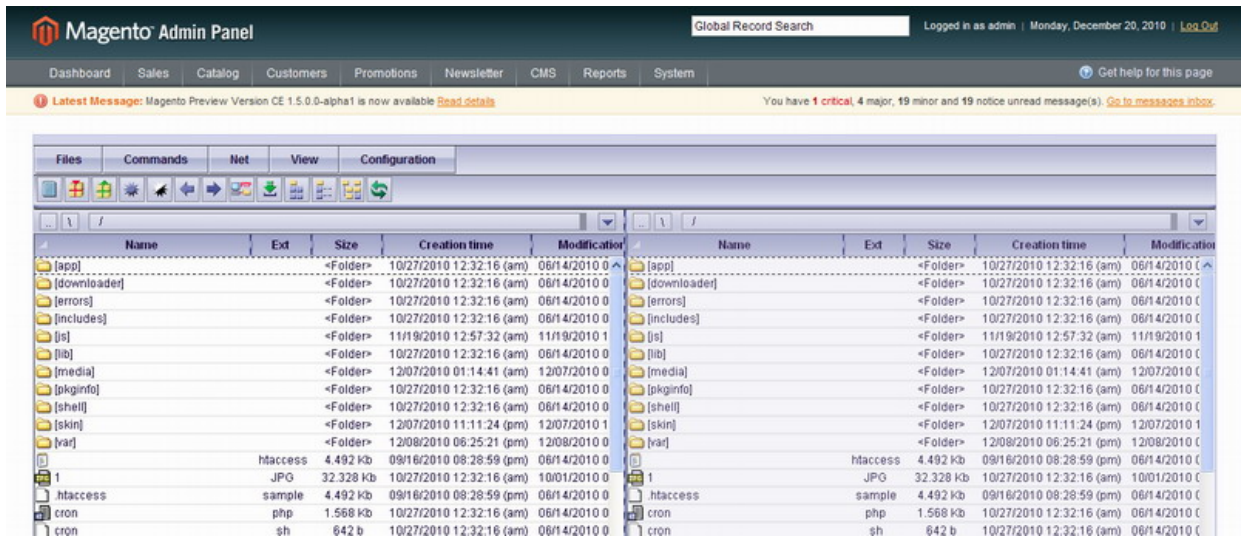
This area is for future releases. Currently no plugins are available and only one (defaults) design theme is available.

## 3.2. Overview of the working area

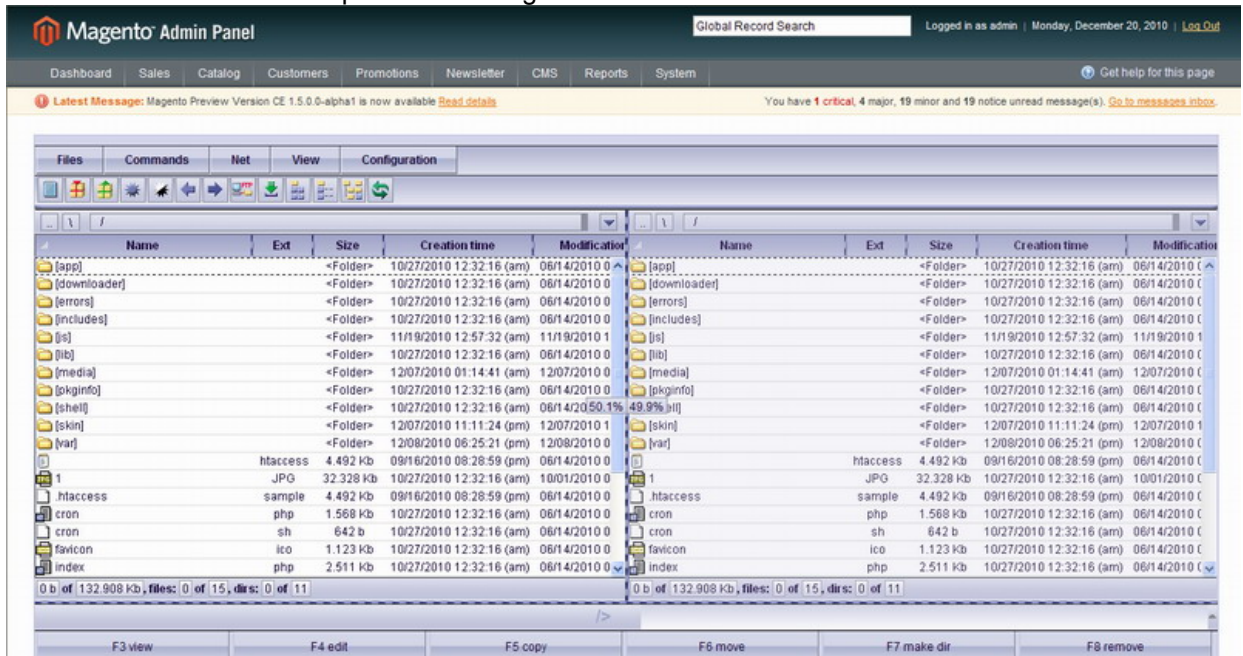
### 3.2.1. Pans

By defaults you see 2 pans each displaying a directory of your Magento website with all its sub-folders and files. By defaults the root directory is displayed in both pans.

One pan is active, you can work with it. Active pan is brighter than inactive. Clicking on any place of a pan makes it active.



You can stretch one pan thus making the other one narrower.

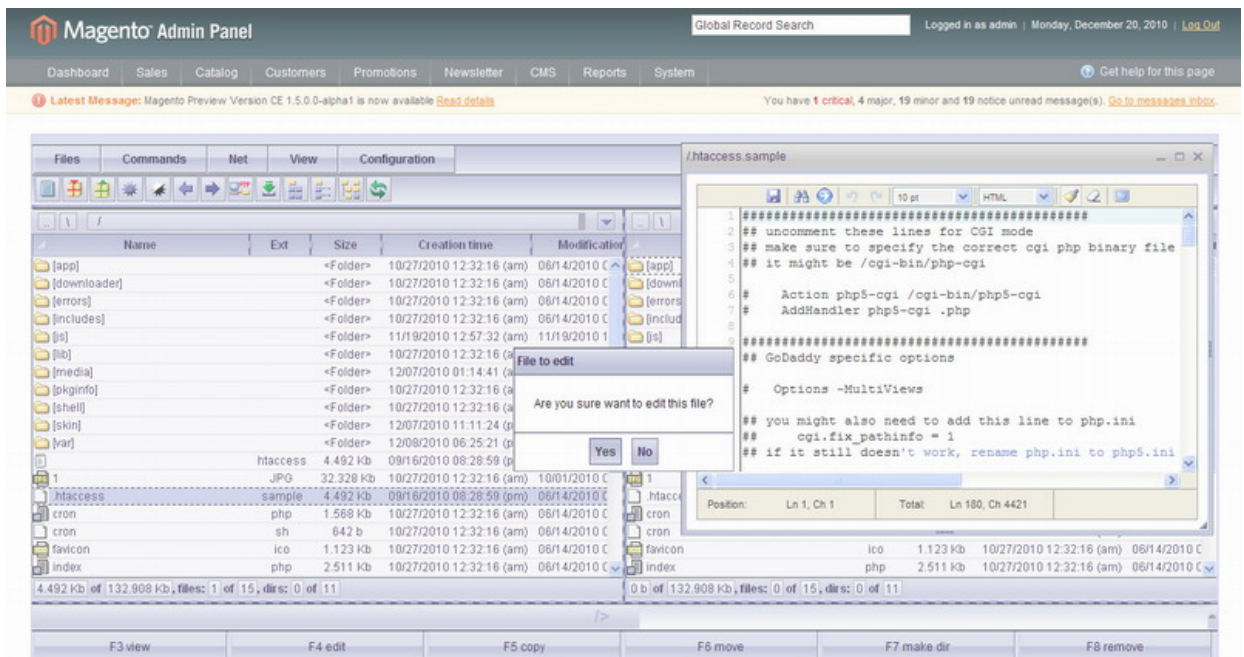


### 3.2.1. Files and Folders

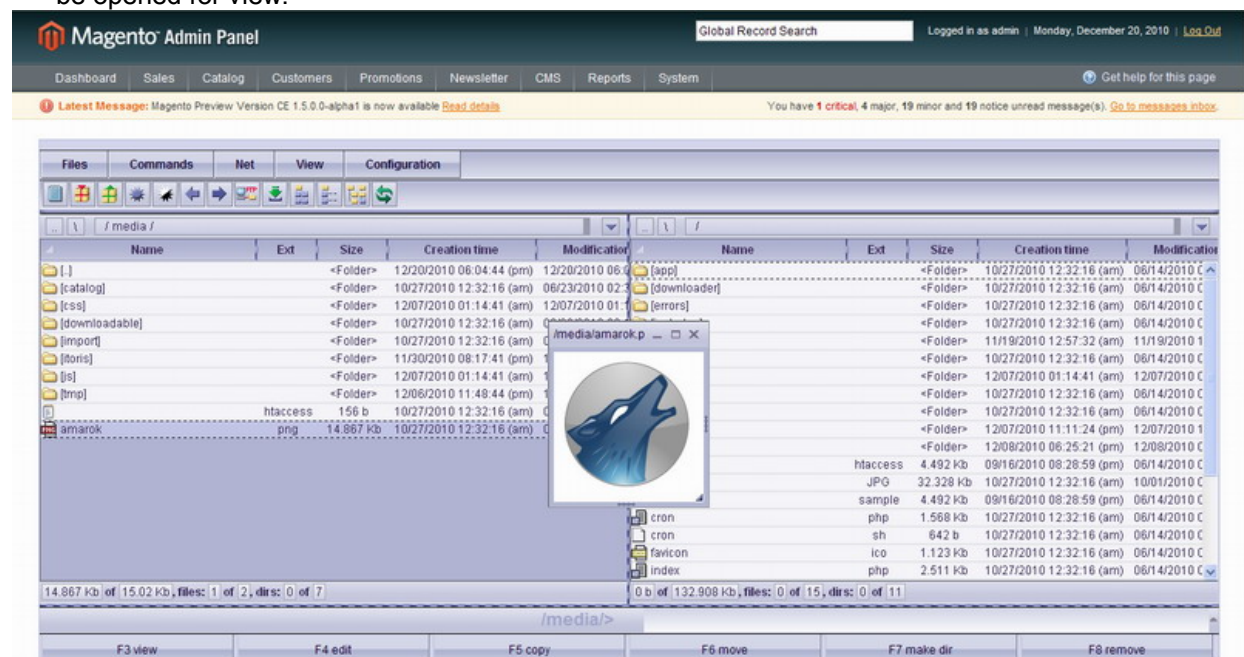
You can move up and down within a directory with your Up and Down arrows on the keyboard. The active file or folder will be within the dotted border.

Double-click on a folder opens it up (with all its sub-folders and files). If you double-click on a file – it can be opened for editing.





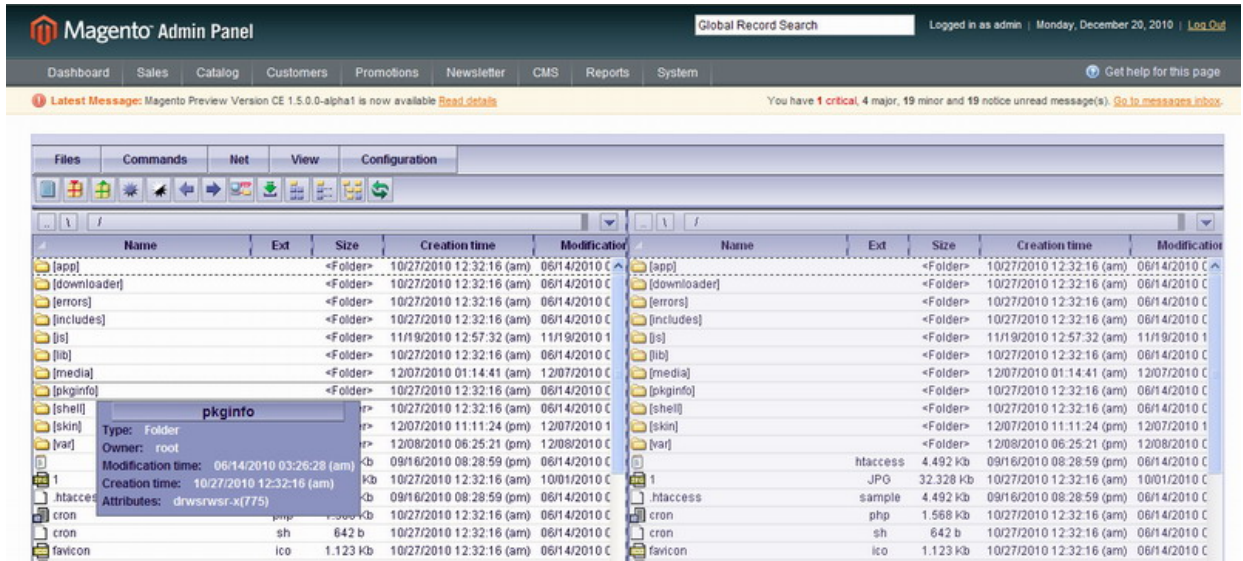
*i* Only txt, php, js, html and xml files can be edited directly from File Magus. The rest of files will be opened for view.



*i* The code files opened for view/editing will have syntaxes highlighted. The feature is available for the following programming languages: apache, basic, bash, c, c#, coldfusion, c++, css, html, java, js, pascal, perl, php, python, ruby, robots.txt, sql, mysql, oracle, xml, ini, lisp.

On hover you will see the properties of the file or directory:

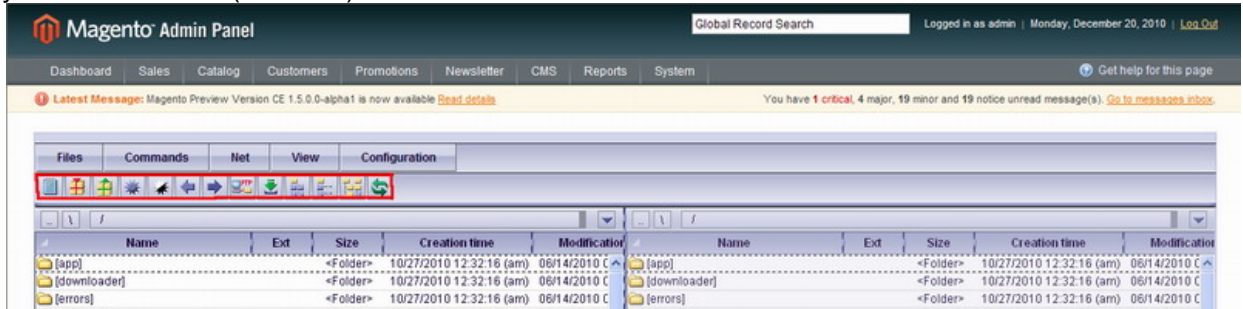
- **Type**
- **Size** (for files only)
- **Owner**
- **Modification time**
- **Creation time**
- **Attributes**



To return to the previous directory you can use **Commands -> Back**. To return to the next directory again you can use **Commands -> Forward**

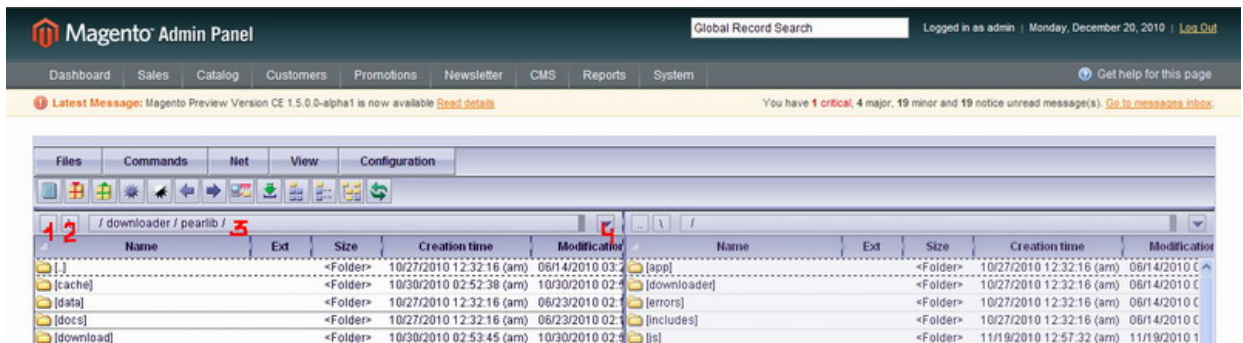
### 3.2.2. Top Toolbar

The toolbar will display icons selected in Configurations. It is a good practice to leave only those you will need often (hot icons). All these actions can be selected from menu as well.



### 3.2.3. Addressbar

The addressbar provides ability to enter the path manually towards the root of the website and ability to move to other directories.



Icon 1 directs one directory higher.

 You have selected images directory, then smilies directory (/images/smilies). Pressing the  returns you to images directory back.

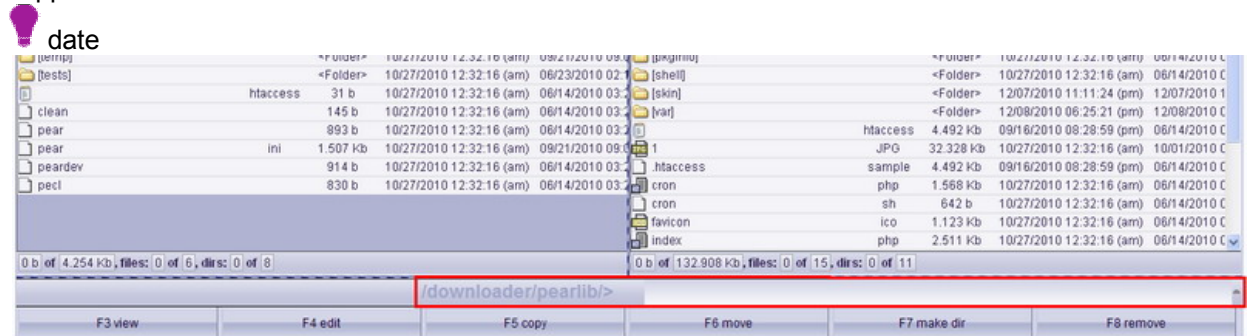
Icon **2** returns you to the root.

The path area (**3**) displays the current path. Here you can enter the path manually. To start typing it press the dark area. This switched the path area to edit mode.

The last icon (**4**) shows the previously opened directories. You can select a directory from here to be directed to it.

### 3.2.1. Command Line

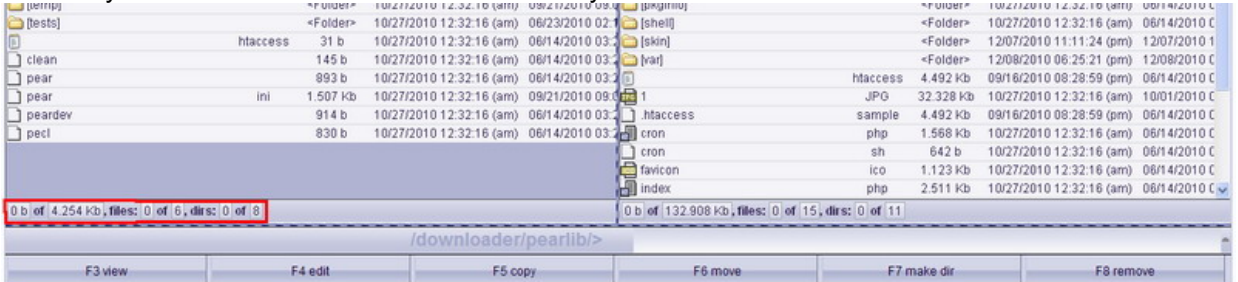
There is a command line. You can enter the path here or execute server commands. File Magus supports standard server commands.



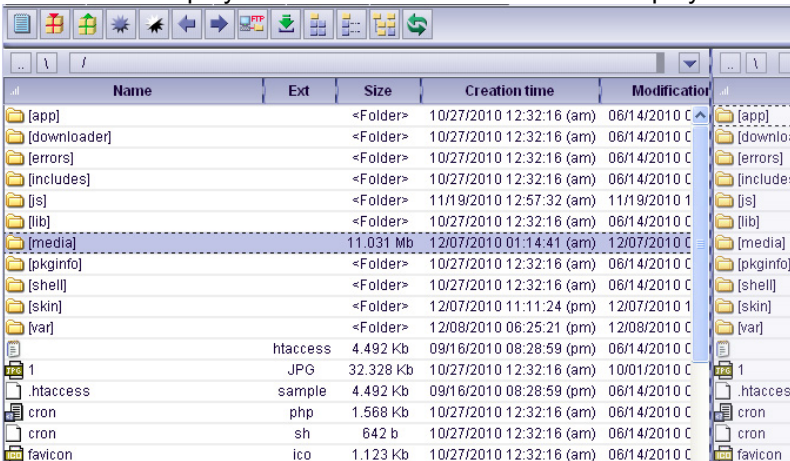
There are also custom commands that can be fulfilled via the command line. Please see Appendix A for all available custom commands.

### 3.2.2. Inforbar

Below the pans there is Inforbar available. By defaults it shows the total size of the directory, how many sub-folders there are in it and how many files there are in it.



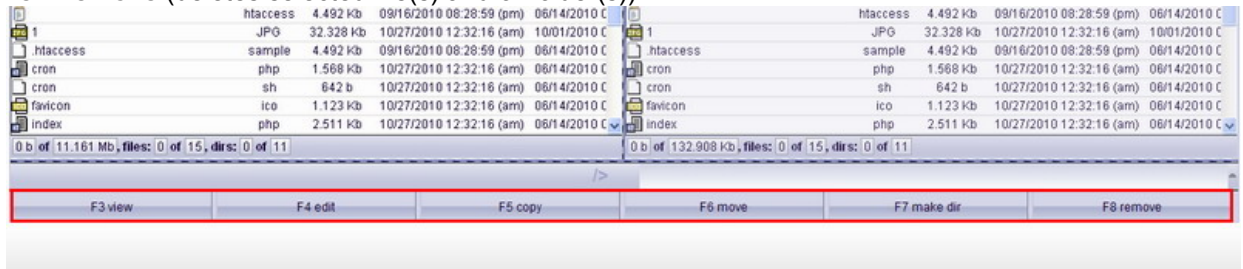
If you select a file or folder and press space key on your keyboard – the properties of the select a file or folder will be displayed. The size of the folder will be displayed in the size column as well.



### 3.2.3. Hot buttons

There are Hot buttons on the bottom for the most commonly used commands. You can use them or press the corresponding button on your keyboard. The commands are:

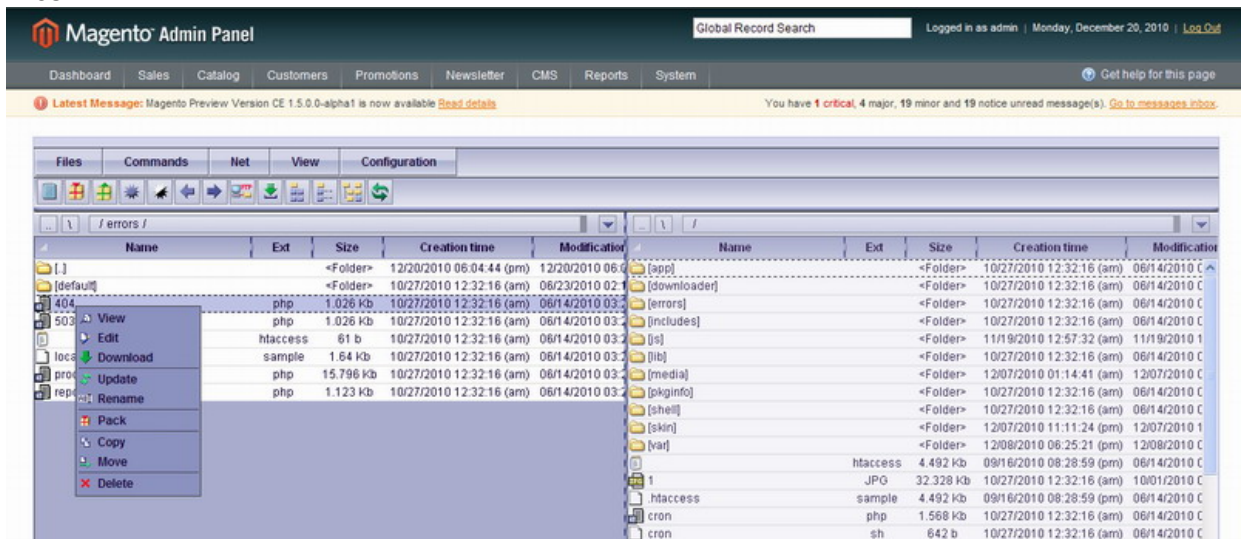
- F3 – view** (for folder – displays the list of files it contains, for file displays its content)
- F4 – edit** (for folder – displays the list of files it contains, for file displays its content)
- F5 – copy** (copies selected file(s) and/or folder(s) from active pan to inactive ones)
- F6 – move** (transfers selected file(s) and/or folder(s) from active pan to inactive ones)
- F7 – make dir** (creates a new folder)
- F8 – remove** (deletes selected file(s) and/or folder(s))



### 3.2.1. Hot commands

The most commonly used commands for files and folders are available with right mouse's button click on a file and folder (click and delay a bit).

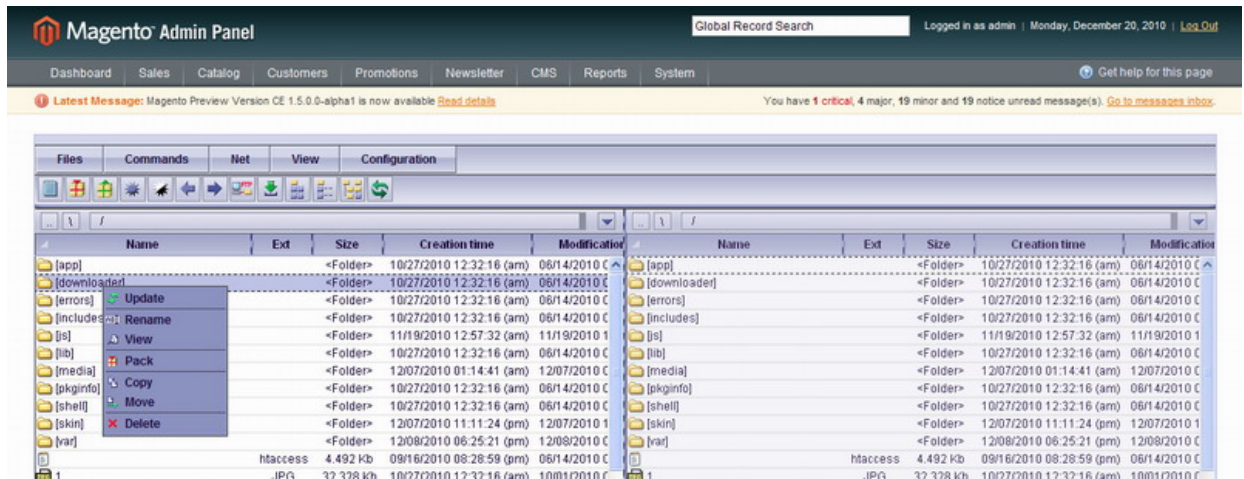
#### Files.



The following commands are available to files:

- **View** – view the file's content
- **Edit** – opens the file for editing
- **Download** – downloads the file on your local PC
- **Update** – updates the file to apply the resent changes
- **Rename** – renames the file
- **New Folder** – creates new empty folder in the selected directory
- **Pack** – packs the file (creates archive)
- **Copy** – copies the file
- **Move** – moves the file
- **Delete** – deleted the file

#### Folders.



The following commands are available to folders:

- **Update** – updates the folder to apply the resent changes
- **Rename** - renames the folder
- **New Folder** - creates new empty folder in the selected directory
- **View** - view the folder's content
- **Download** - downloads the folder on your local PC
- **Pack/unpack** - packs the folder (creates archive)/unpacks archive
- **Copy** – copies the folder
- **Move** – moves the folder
- **Delete** – deleted the folder

### 3.3. Work with files and folders

The following actions/commands are available with files:

#### 3.3.1.View

**Browse** – to browse the files with a directory use your Up and Down arrow keys on keyboard

**View properties** – to view main properties of a file/directory put your mouse over it or select the file, then select **Files -> File/dir properties**.

**View file** – to view a file press F3 on your keyboard or Hot button below the list of files

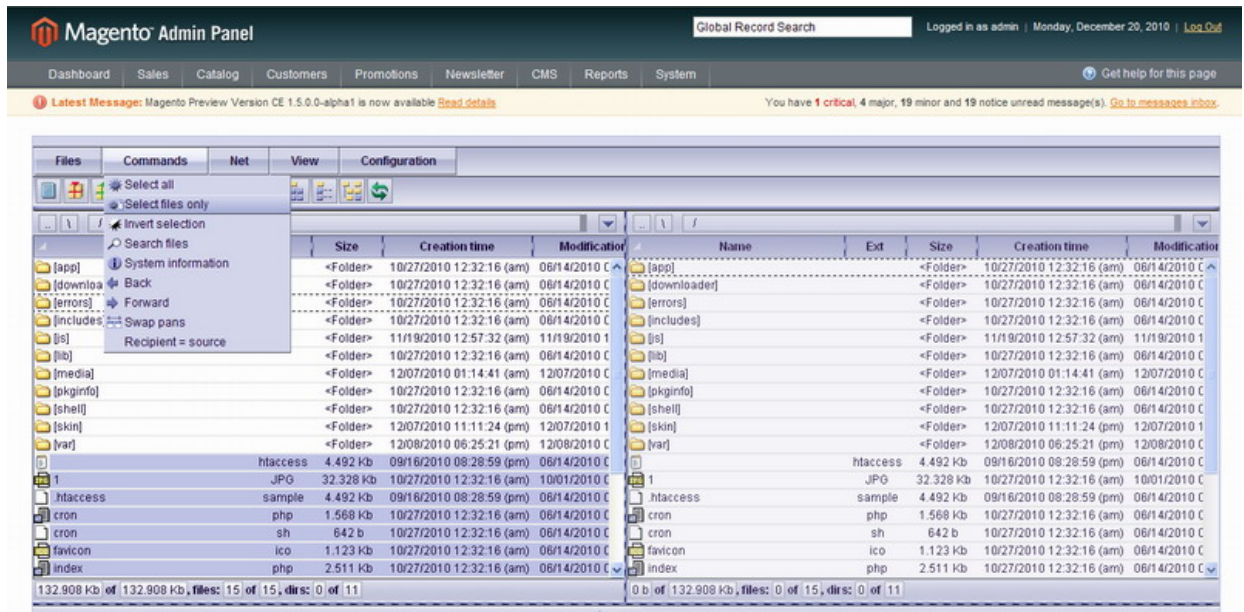
**View files only** – to view files only within selected folders choose the folders, then select **Files -> File List -> Files only**

**View files and sub-directories** of the selected directories – select directories, then choose - **File List -> Files and directories**

**View files and all embedded sub-directories** of the selected directories – select directories, then choose - **File List -> Files, dirs and subdirs**

#### 3.3.2.Edit

**Select files only/select all** – select **Commands -> Select Files only/ Commands -> Select all**



**Invert selection** – select **Commands** -> **Invert selection**

**Edit file** – to edit file double-click it or press F4 on your keyboard or Hot button below the list of files

**Copy file/folder** – select files/folders to be copied and press F5 on your keyboard or Hot button below the list of files

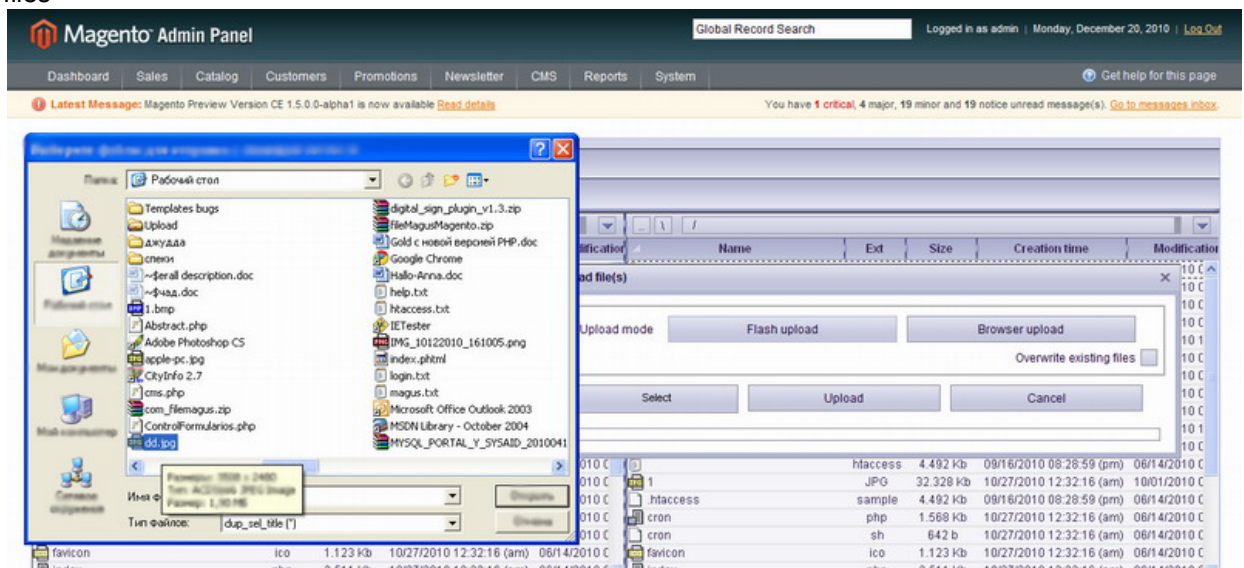
**Move file** – select files/folders to be moved and press F6 on your keyboard or Hot button below the list of files

**Remove** - select files/folders to be deleted and press F8 on your keyboard or Hot button below the list of files

### 3.3.3. New/upload

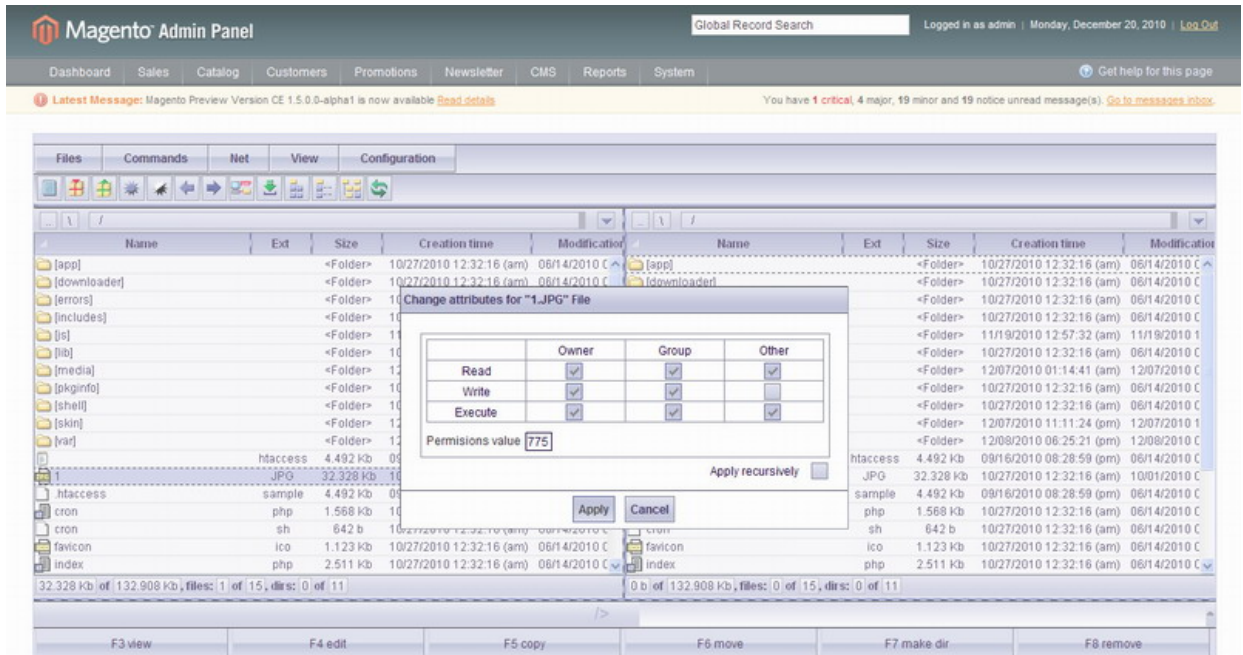
**Add a new text file** – to add a new text file select **Files** -> **New Text File** (or press hot icon on the top pane). You will need to enter file's name, then file's content. The file will be created in the selected directory (of the active pan)

**Upload new files** – you can upload new files from your local computer. To do it select **Files** -> **Upload** files

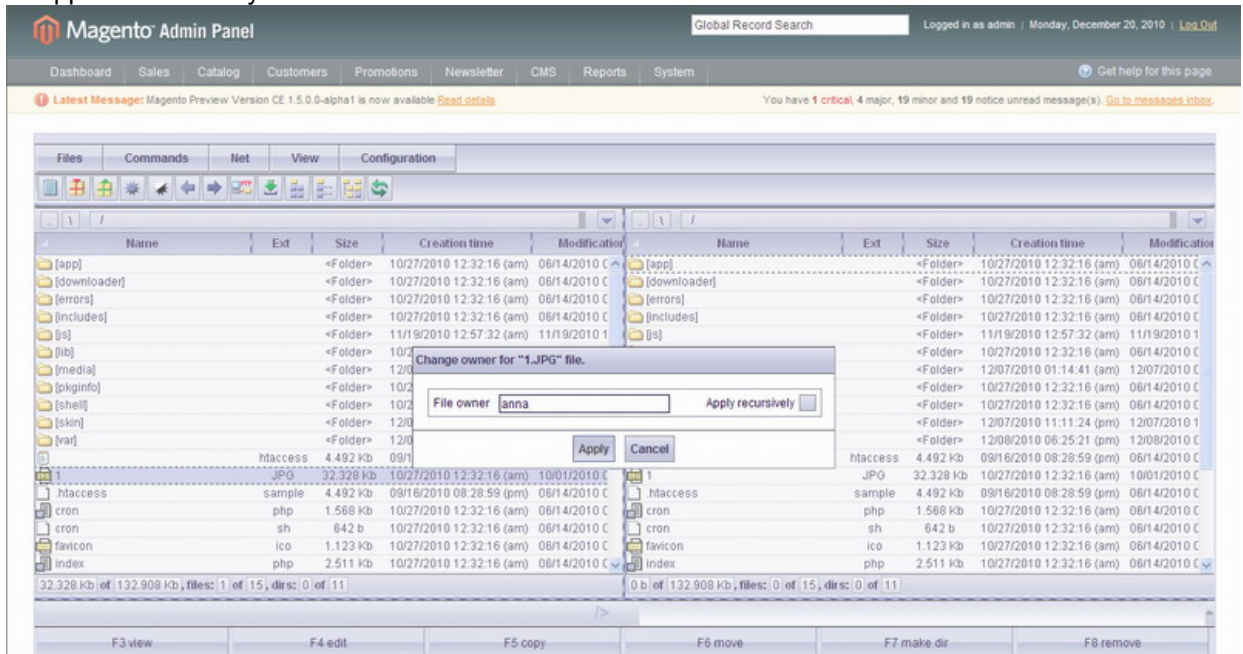


### 3.3.1. Change attributes

**Change attributes** – to change attributes of a file/folder select **Files -> Change attributes**. The command can be applied recursively.

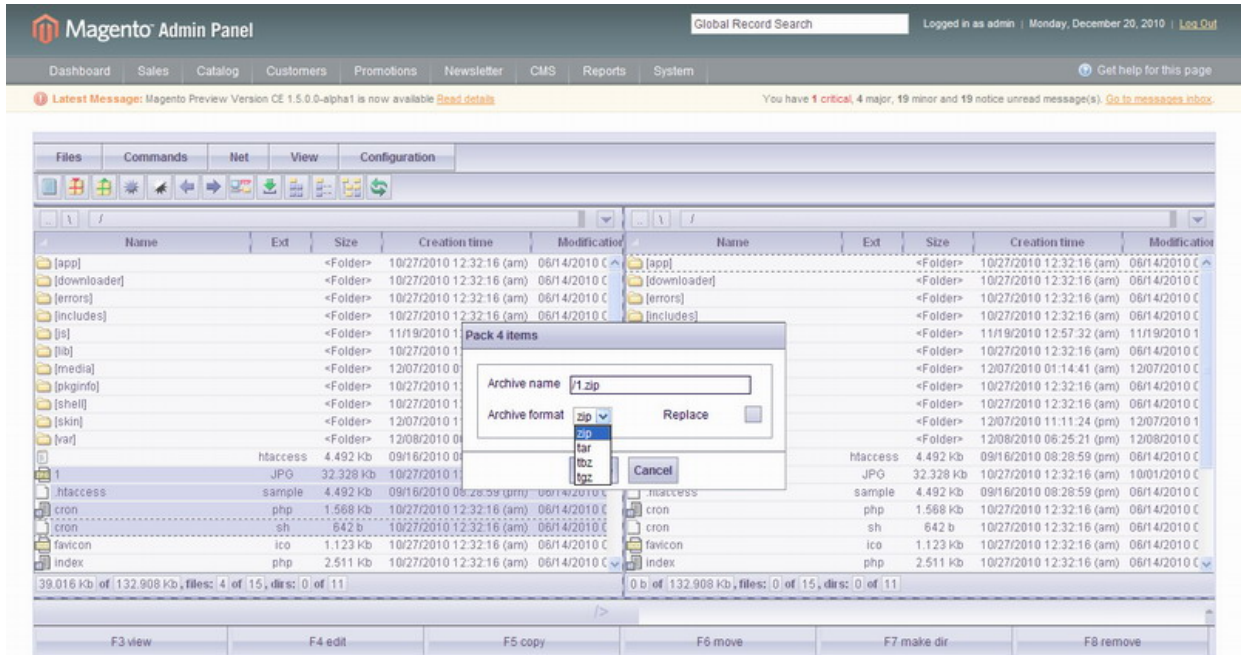


**Change owner** – to change the owner of a file/folder select **Files -> Change owner**. The command can be applied recursively.



### 3.3.1. Archives

**Pack files** – to pack files select them, then select **Files -> Pack files**. Files can be packed to .zip, .tag or .gzip archive. The archive can be replaced.



**Unpack archive** - to unpack archive select it, then select **Files -> Unpack archive**. You can select the directory of unpacking, set permissions level, owner.

### 3.3.1.Actions applied to several files/directories

**Compare files** – to compare two files select them, then select **Files -> Compare files**

**Compare directories** - to compare two directories select them, then select **Files -> Compare dirs**

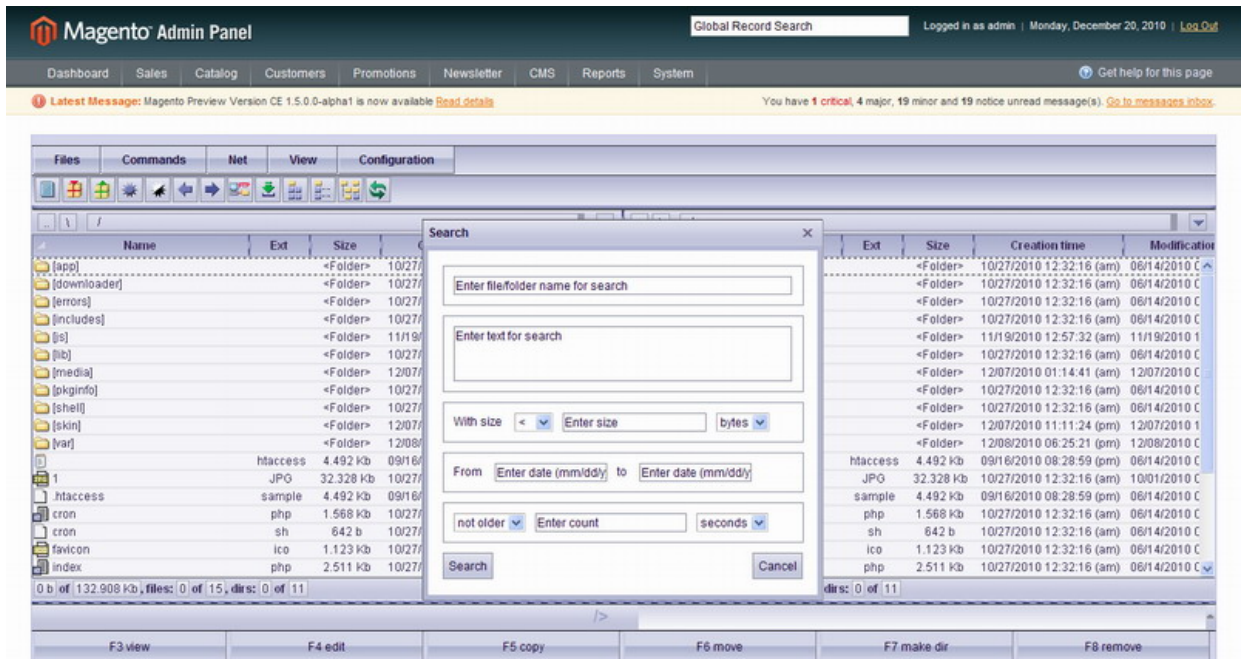
**Split file** – to split a file select **Files -> Split file**

**Combine sel. files** – to combine several files select them, then select **Files -> Combine sel. files**

### 3.3.1.Search

There is an advanced search of files/folders available. Select **Commands -> Search**.





Enter search parameters if required:

- **Search path** (if it is not entered – the search will be applied throughout the whole site)
- **Word/phrase for search**
- **Size**
- **From-to** date of creation (period can be set)
- **Time of creation** (files created before selected time, after selected time or exactly on the selected time)

### 3.3.1. Special features

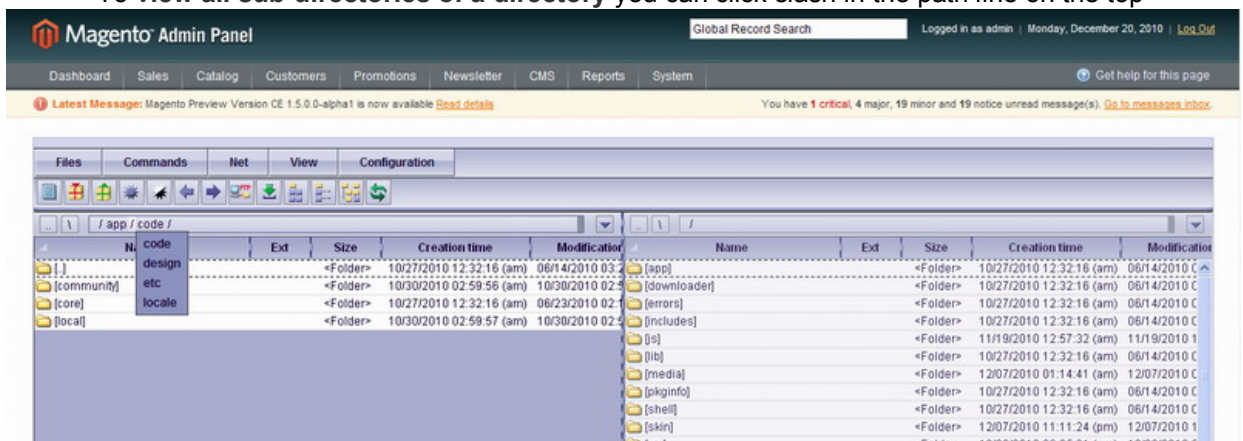
There is a number of special features that make **File Magus** even more unique.

**Drag files directly from your local computer to your website** – select a file in your local file manager and drag it to the area of File Magus

**Change the size of the columns.** Click a column with your mouse’s left button. Keep it pressed and move right to expand the column, left – to narrow it.

**Change the measure units** – there is size under each pan. Double-click on it to change its measure unit (bytes – Kb –Mb-etc)

**To view all sub-directories of a directory** you can click slash in the path line on the top



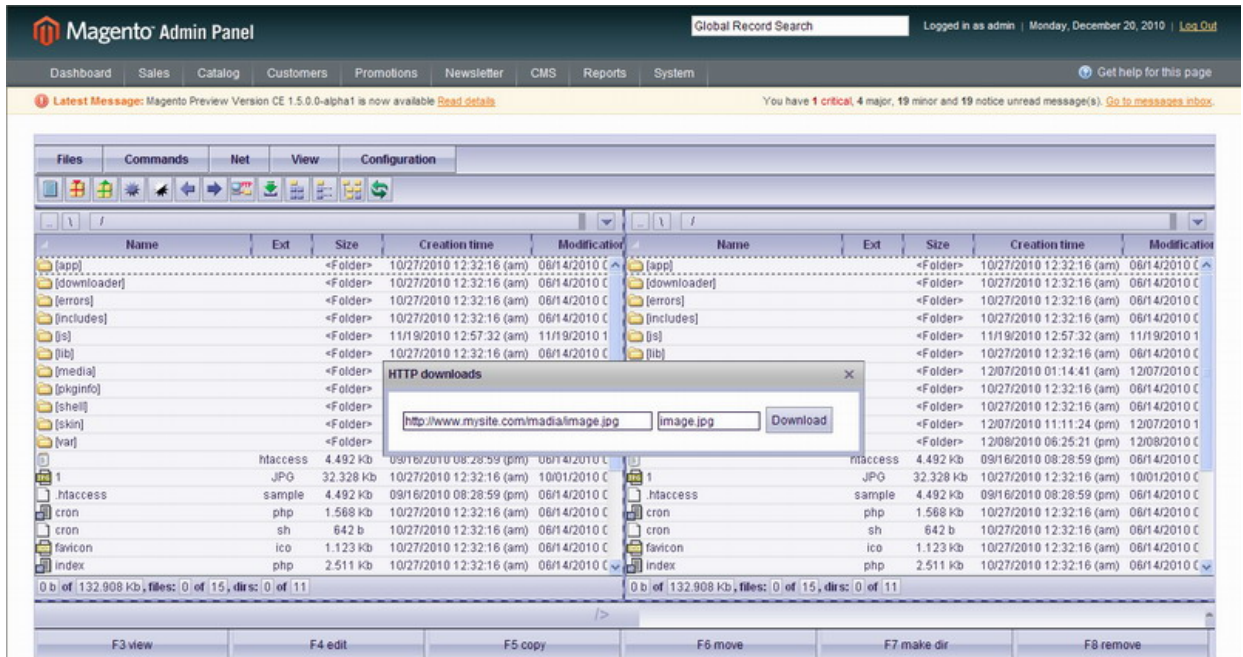
3.4. Remote connections

**File Magus** has two ways of files exchange with remote servers:

- HTTP download
- FTP

3.4.1.HTTP Download

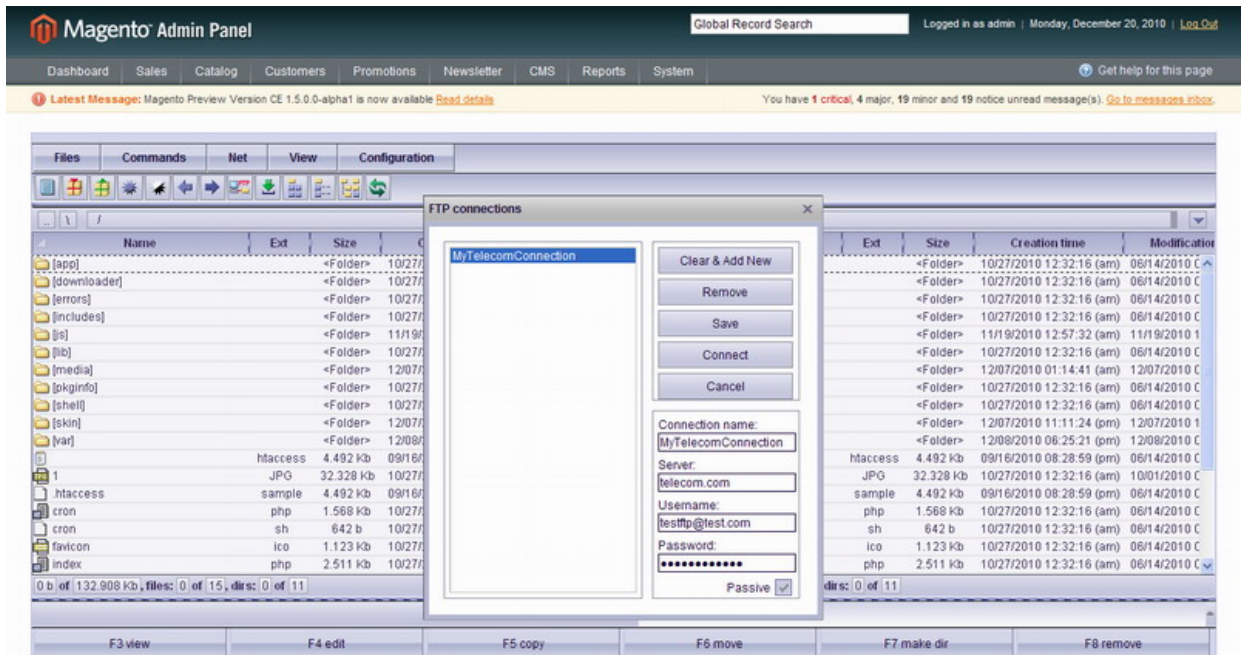
To download a file/folder from a server to your website select the directory for download in the active pan. Then select **Commands -> HTTP Download**



Enter the path to the file/folder to be downloaded and name (if required). The path should be entered in <http://www.mysite.com/> format. Then press “Download” button. The selected file will be downloaded to the selected directory.

3.4.2.FTP

**File Magus** allows to set FTP connections. To create a list of commonly used connections select **Commands -> FTP**.



To set a connection enter its data:

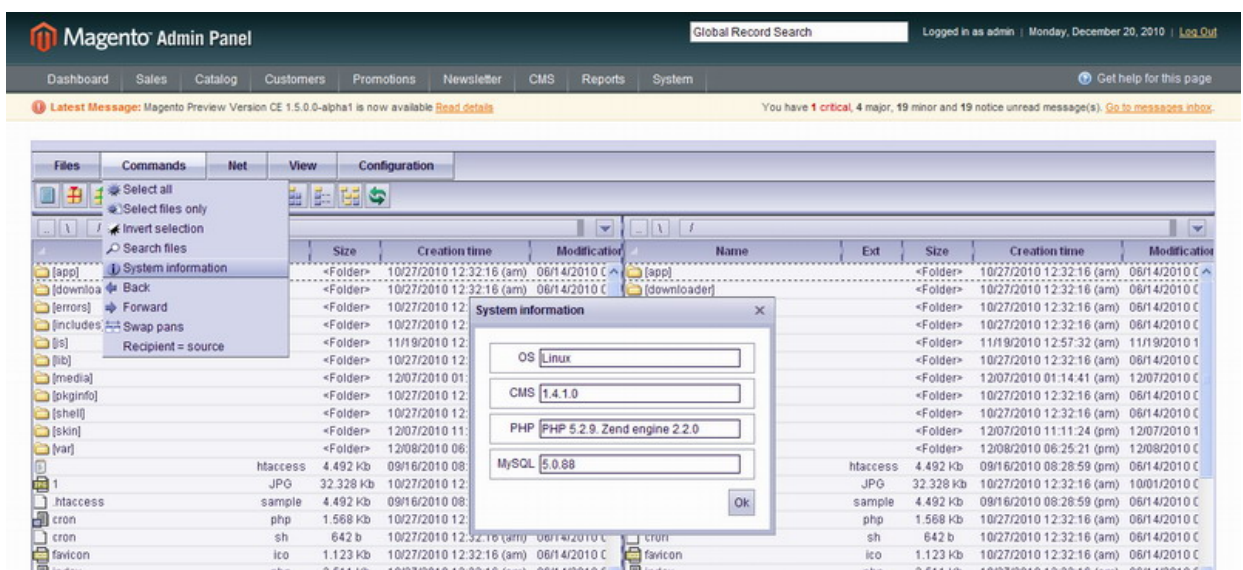
- **Name** (will be used for you to understand which connection it is)
- **Server** (server name)
- **Credentials** (username and password to set FTP connection)
- **Type** (active or passive. If Passive checkbox is checked the connection will be passive, otherwise – active. The majority of FTP servers require passive connections)

You can create several connections; they will be available in the window on the left. To connect select a connection and press **Connect**.

To remove a connection select it and press **Remove**.

### 3.5. View System Information

**File Magus** provides system information of your website. To view it select **Commands** -> **System Information**.



## Appendix A

Custom commands that can be executed from the command line are the following:

- **swap** swaps pans
- **equiv** change the directory of the inactive pan(s) to be the same as with active
- **selall** select all within active pan
- **fsel** select files within active pan
- **dsel** select folders within active pan
- **isel** invert selection
- **back** change to the previous action
- **frwd** change back to the following action
- **pans [quantity]** number of pans to be displayed. Can be 1, 2 or 4